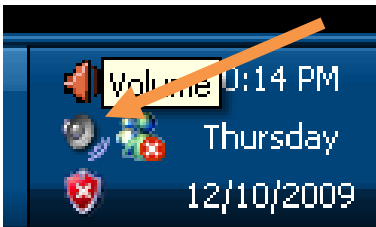


Purpose: Instructions on how to switch between audio output devices in Windows XP

Resolution:

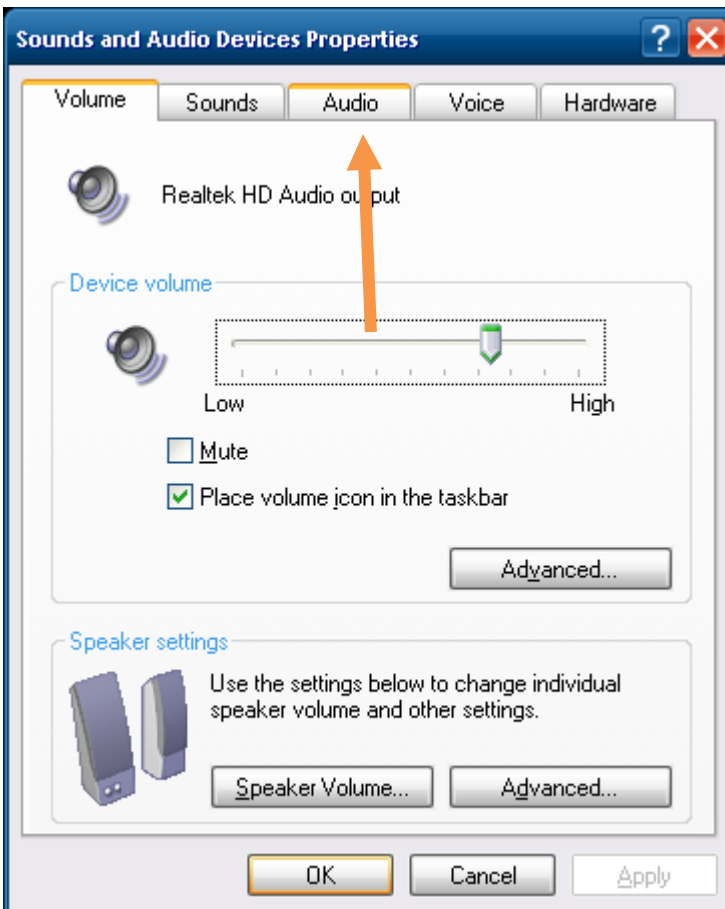
- 1) Start by navigating to your system tray and locating the speaker icon (shown below)



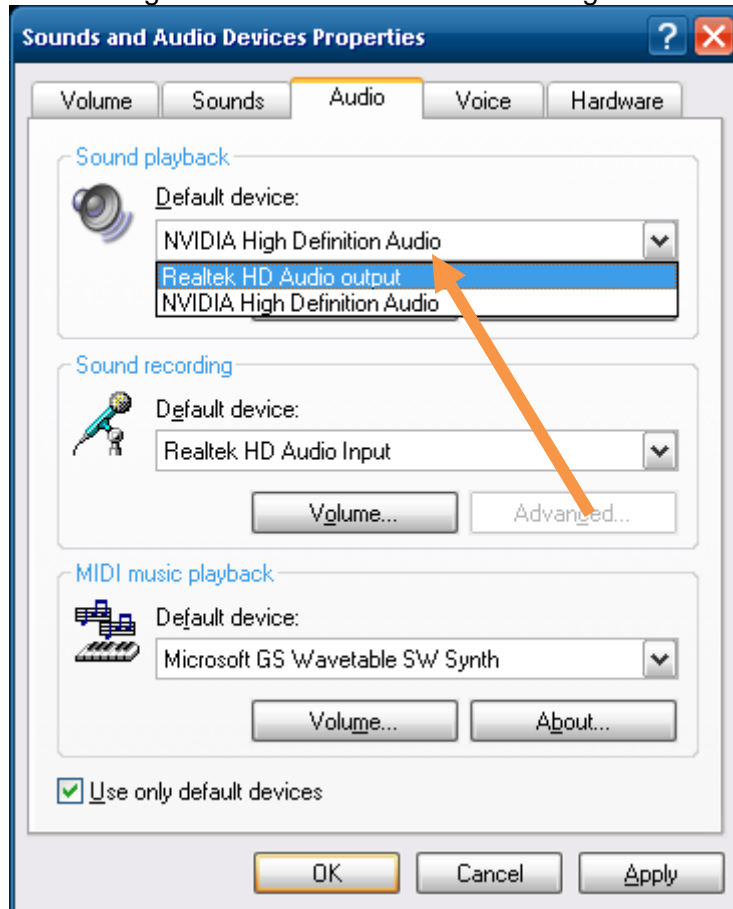
- 2) Right click on the speaker icon and select 'Adjust Audio Properties'



- 3) Select the 'Audio' tab



- 4) Select the appropriate audio output (playback) device
 - a. Realtek HD Audio output is the Analog signal (Headphone Jack)
 - b. NVIDIA High Definition Audio is the HDMI digital audio signal



- 5) Click 'Apply' to save your settings. Click 'Ok' to save your settings and close the window.