

Remote Control VNC application Brief product notes:

In the config file section of the remote control app, you may use UNC names and / or IP addresses.

Passwords in the config file are case sensitive.

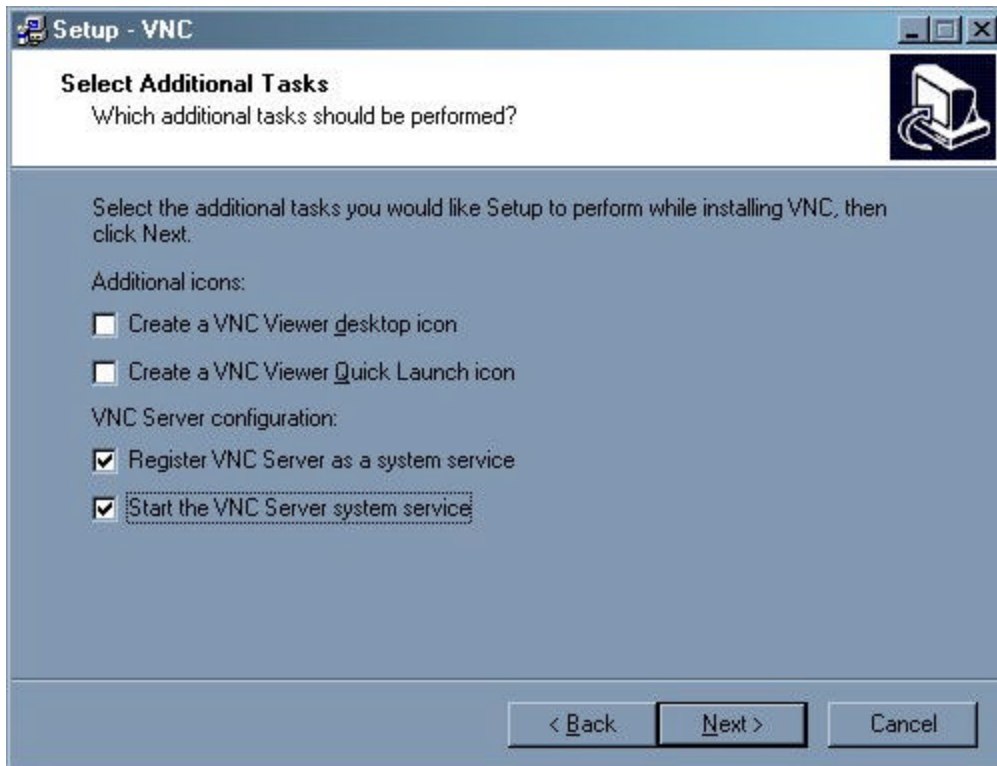
The caps lock key if enabled on the machine hosting the RemoteApp software will also cause problems when RemoteApp tries to enter a password through the interface.

Not all programs will work properly through the WinVNC interface that RemoteApp uses, so if you run into problems with the screen updating, turn off Fullscreen mode (if possible) in the app you are using.

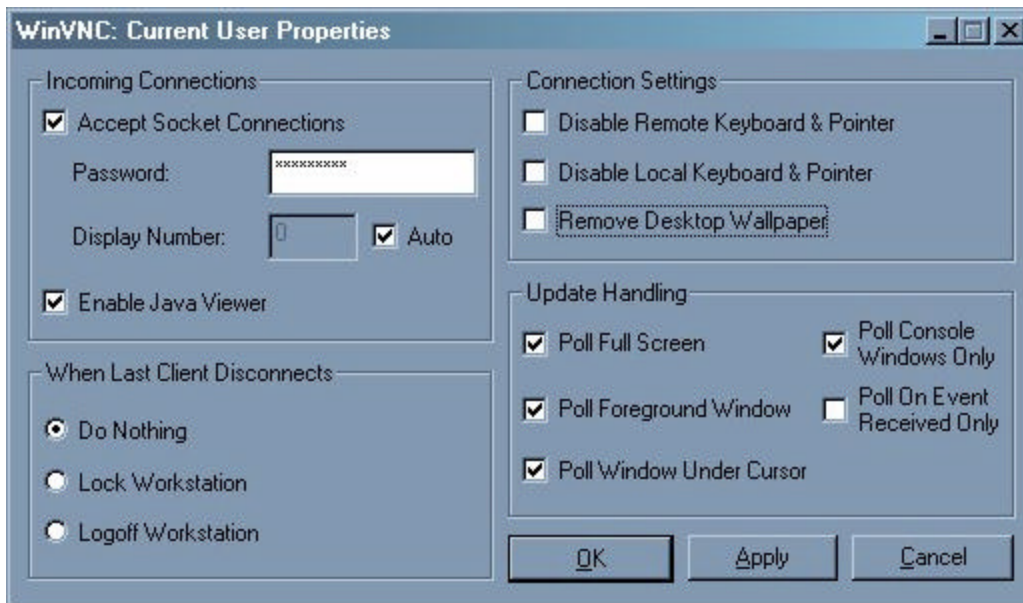
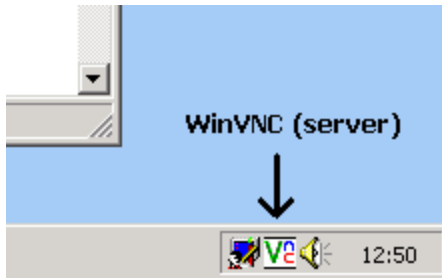
The VNC software does not need to be installed on the client machine that is running RemoteApp.

The VNC server software DOES need to be installed on the VNC server machine.

Take all defaults in the install with the exception of the following screen, and then choose the bottom two checkboxes as shown below:



It is recommended that the VNC server system uses the following configuration (right click on the white VNC system tray icon and select Properties):



You may choose to turn on the “Remove desktop wallpaper” option if you are short on network bandwidth.

The port used by the VNC application is TCP and UDP port # 5900, inbound and outbound.

More detailed information can be found here:

<http://www.realvnc.com/winvc.html>