

CS 460 Instructions

Run the scan converter control panel software found in

Select Start

Go to Programs

Select TV One Control Panel

Select Com Port and set to # 1

Click on the appropriate Scan converter product.

Most systems come with a CS-460 Eclipse PCI/ISA

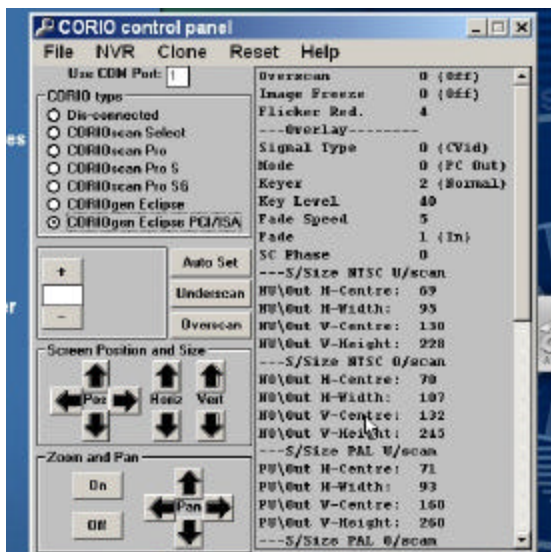


Fig1

Older systems may have a CS-450 Eclipse (these are external boxes)

Click Underscan

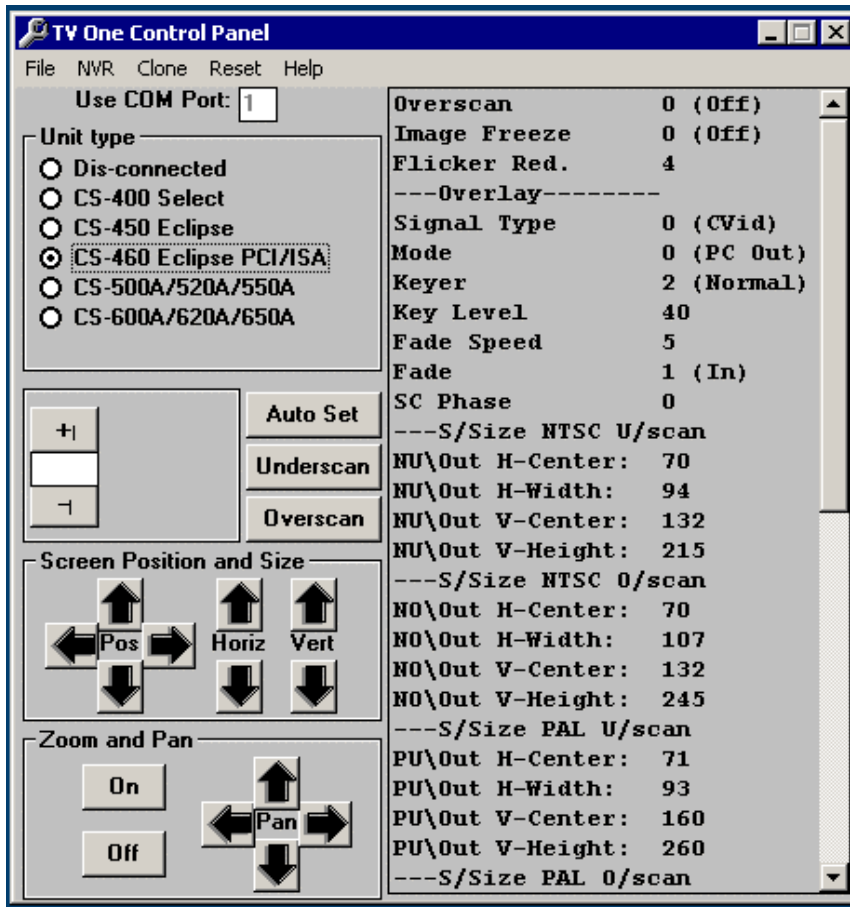


Fig 2

Click Auto Set

Wait for the video signal to stabilize.

Adjust the signal to your preference by using the "Screen Position and Size" buttons. (See screen position in fig 2)

To save settings

Click on the NVR menu

Select Store Settings

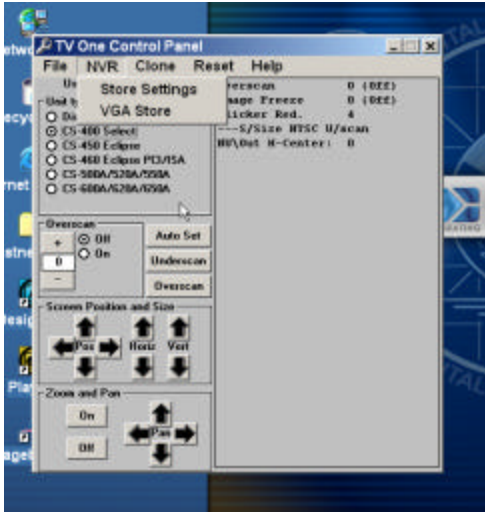


Fig3

Click on the NVR menu
Select VGA Store.

Click on the File Menu
Select Save to C:\tvone.cfg

This process will then save all settings to the card and to a file on the hard disk, so that the card can be reloaded from that file if something happens to it.